

WISCONSIN POWER AND LIGHT COMPANY


LEGACY SURFACE IMPOUNDMENT APPLICABILITY REPORT

FORMER ROCK RIVER GENERATING STATION

REVISION 0
NOVEMBER 8, 2024

Owner/Operator Certification

I certify under penalty of law that I have personally examined and am familiar with the information submitted in this demonstration and all attached documents, and that, based on my inquiry of those individuals immediately responsible for obtaining the information, I believe that the submitted information is true, accurate, and complete. I am aware that there are significant penalties for submitting false information, including the possibility of fine and imprisonment.



Authorized Representative Name (signature)

Amanda Blank

Authorized Representative Name (printed)

Director of Operations

Title

Date: **10/22/24**

Introduction

On May 8, 2024, the United States Environmental Protection Agency (EPA) issued the Final Legacy Coal Combustion Residual (CCR) Surface Impoundment Rule¹ (Legacy Rule) that established regulations for CCR surface impoundments at inactive facilities (legacy surface impoundments). The Legacy Rule requires that legacy surface impoundments (LSI) that no longer received CCR but contained both CCR and liquid on or after October 19, 2015 and that is located at an inactive electric utility, generally comply with the EPA requirements for inactive CCR surface impoundments in accordance with Title 40 of the Code of Federal Regulations (CFR), Part 257 Subpart D Hazardous and Solid Waste Management System; Disposal of CCR from Electric Utilities (EPA, 2015). The effective date of the Legacy Rule is November 8, 2024. An LSI Applicability Report in accordance with 40 CFR §257.100(f)(1) is required for each LSI by the Legacy Rule effective date.

On behalf of Wisconsin Power and Light Company (WPL), Alliant Energy has contracted with Burns & McDonnell Engineering, Inc. (Burns & McDonnell) to develop an Applicability Report for its Rock River Generating Station (Facility), a former coal-fired power plant, or inactive electric utility or facility, that was located in Beloit, Wisconsin. This Applicability Report contains the information required as outlined in 40 CFR §257.100(f)(1).

This Applicability Report was developed using information provided by Alliant Energy, publicly available online information, and aerial imagery of the facility.

¹ Hazardous and Solid Waste Management System: Disposal of Coal Combustion Residuals From Electric Utilities; Legacy CCR Surface Impoundments; 40 CFR 257, Federal Register Vol 89, May 8, 2024

Legacy CCR Surface Impoundment Information

The following regulatory requirements for this report, as outlined in 40 CFR §257.100(f)(1), are each stated with the required information that must be reported.

40 CFR §257.100(f)(1)(i)(A): “The name and address of the person(s) owning and operating the legacy CCR surface impoundment with their business phone number and email address.”

- Name of Owner and Operator:

Wisconsin Power and Light Company
4902 North Biltmore Lane
Madison, WI 53718

- Authorized Representative:

Amanda Blank
Director of Operations
Alliant Energy
4902 North Biltmore Lane
Madison, WI 53718
amandablank@alliantenergy.com
(608) 458-6316

- Facility Contact:

Jeff Maxted
Manager - Environmental Services & Corporate Sustainability
Alliant Energy
4902 North Biltmore Lane
Madison, WI 53718
jeffreymaxted@alliantenergy.com
(608) 458-3853

40 CFR §257.100(f)(1)(i)(B): “The name associated with the legacy CCR surface impoundment.”

- Rock River - Final WPDES Settling Pond

40 CFR §257.100(f)(1)(i)(C): “Information to identify the legacy CCR surface impoundment, including a figure of the facility and where the unit is located at the facility, facility address, and the latitude and longitude of the facility.”

- The Facility is located at 827 West B R Townline Road, Beloit, Wisconsin, 53511

- Latitude (decimal degrees) 42.576247°
- Longitude (decimal degrees) -89.032166°

A location map is depicted in Figure 1 and 2.

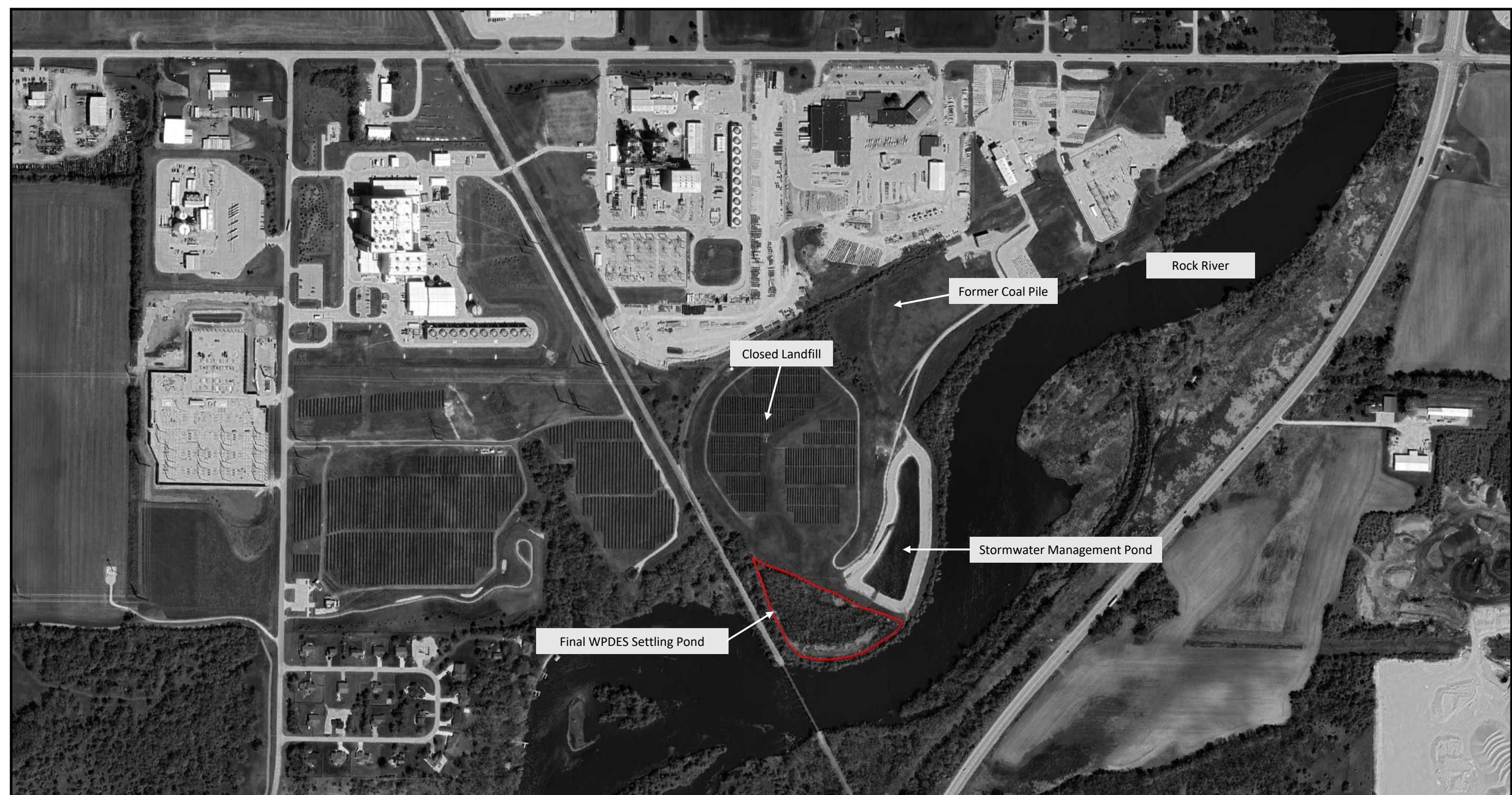
40 CFR §257.100(f)(1)(i)(D): "The identification number of the legacy CCR surface impoundment if one has been assigned by the state."

The LSI does not have an ID number assigned by the state. The pond previously discharged under the Wisconsin Pollutant Discharge Elimination System (WPDES) Permit number WI-0002402.

40 CFR §257.100(f)(1)(i)(E): "A description of the current site conditions, including the current use of the inactive facility."

The LSI is a densely vegetated area that is not currently used to support WPL operations. The LSI does not have an engineered cover system. The LSI is bordered by the Rock River to the south and east, railroad tracks to the west, and an inactive closed landfill and stormwater management pond to the north. The LSI does not contain surface water, but does receive precipitation. As of 2012, the estimated volume of CCR in the LSI was 2,000 cubic yards. The Facility ended coal combustion in 2000 and converted to using natural gas as fuel. The facility retired all generation in 2012 and was demolished in 2016. The solar farm visible in Figure 2 provides ancillary power and is not tied into the public utility grid.

FIGURES



Rock River

Former Coal Pile

Closed Landfill

Stormwater Management Pond

Final WPDES Settling Pond

LEGEND:
— Legacy Surface Impoundment
(approximate limits)



Legacy Surface Impoundment Applicability Report



Figure 1
**Former Rock River
Generating Station**

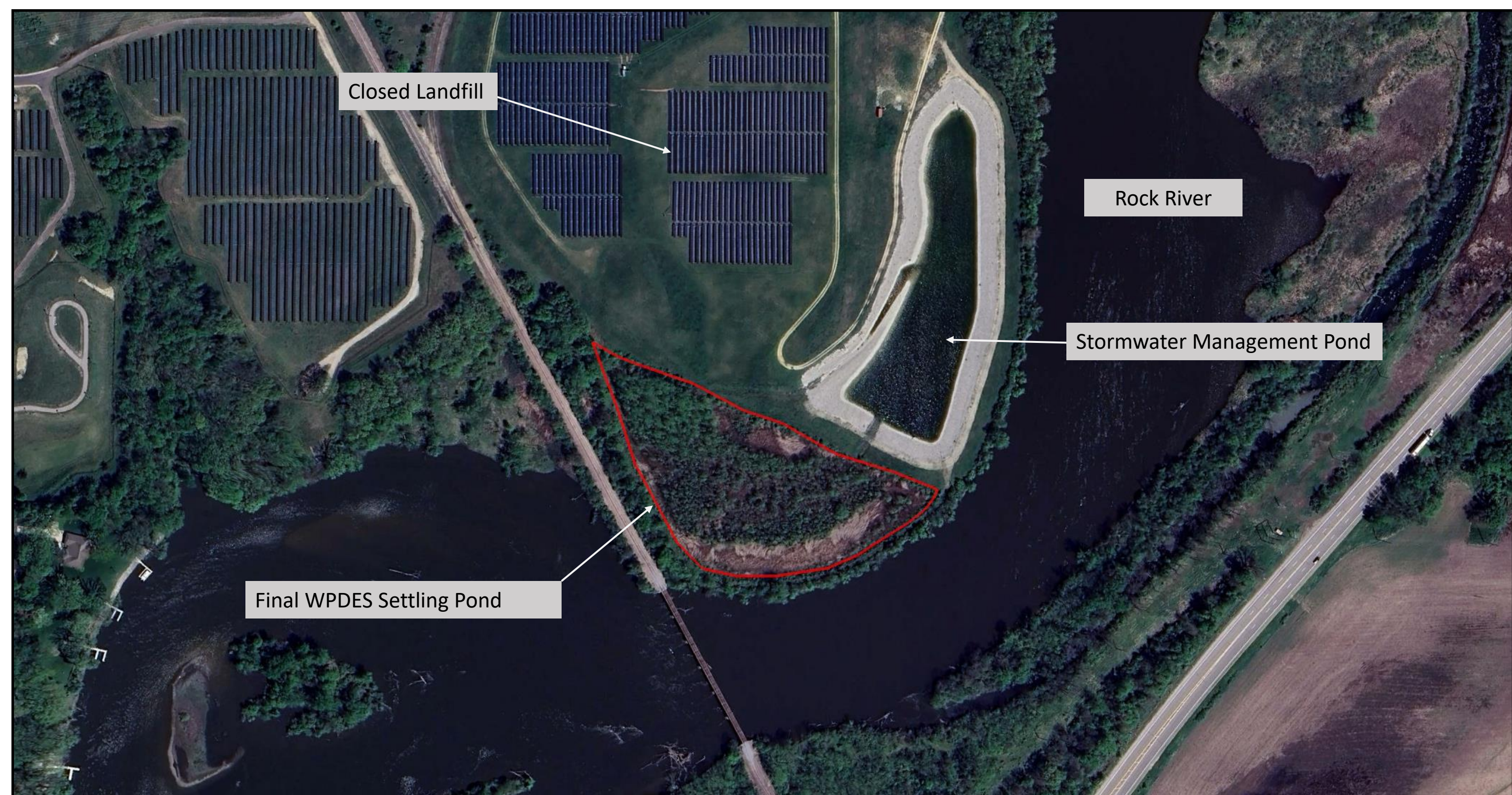
827 West B R Townline Road,
Beloit, Wisconsin, 53511

0 feet 600 feet 1200 feet
12/05/2024 - Classification Internal - ECRM13410009

Source: Google Earth, May 2, 2024

November 2024

Wisconsin Power and Light Company



Closed Landfill

Rock River

Stormwater Management Pond

Final WPDES Settling Pond

LEGEND:
— Legacy Surface Impoundment
(approximate limits)

0 feet 350 feet 700 feet

12/05/2024 - Classification: Internal - ECRM13410009



Source: Google Earth, May 2, 2024

Legacy Surface Impoundment Applicability Report

November 2024



Figure 2
Former Rock River
Generating Station LSI

827 West B R Townline Road,
Beloit, Wisconsin, 53511

Wisconsin Power and Light Company

