






Post-Closure Plan for Existing CCR Surface Impoundments and Existing CCR Landfills

Prepared for Interstate Power and Light Company
Prairie Creek Generating Station
Cedar Rapids, IA

Issue Date: August 28, 2018
Issue Purpose: For Use

Prepared by:		8/28/2018
	M. Turner	Date
Reviewed by:		8/28/2018
	D. Nielson	Date
Approved by:		8/28/2018
	R. Rivera	Date

Certification and Seal:



Rachel Rivera
08/28/18



55 East Monroe Street
Chicago, IL 60603-5780 USA
Project No. 13391-017

Report No. SL-013387
Revision: 2

FINAL



TABLE OF CONTENTS

1. INTRODUCTION & PURPOSE.....	1
2. DESCRIPTION OF MONITORING / MAINTENANCE ACTIVITIES.....	2
2.1 Mowing	3
2.2 Visual Inspections by Plant Personnel	3
2.3 Visual Inspection and Report by Certified Professional Engineer.....	3
2.4 Groundwater Monitoring	3
3. CONTACT INFORMATION FOR POST-CLOSURE CARE	3
4. PROPERTY USE DURING POST-CLOSURE CARE PERIOD	4
5. CERTIFICATIONS	4
6. REFERENCES	4

LEGAL NOTICE

This report ("Deliverable") was prepared by Sargent & Lundy, L.L.C. ("S&L"), expressly for the sole use of Alliant Energy ("Client") in accordance with the agreement between S&L and Client. This Deliverable was prepared using the degree of skill and care ordinarily exercised by engineers practicing under similar circumstances. Client acknowledges: (1) S&L prepared this Deliverable subject to the particular scope limitations, budgetary and time constraints, and business objectives of the Client; (2) information and data provided by others may not have been independently verified by S&L; and (3) the information and data contained in this Deliverable are time sensitive and changes in the data, applicable codes, standards, and acceptable engineering practices may invalidate the findings of this Deliverable. Any use or reliance upon this Deliverable by third parties shall be at their sole risk.

1. INTRODUCTION & PURPOSE

Interstate Power and Light Company (IPL) – a wholly owned subsidiary of Alliant Energy – operates the four-unit Prairie Creek Generating Station (PCS), located in Cedar Rapids, Iowa. This coal-burning facility operated a system of Coal Combustion Residual (CCR) surface impoundments and piles.

To comply with the requirements of the USEPA Final CCR Rule (40 CFR 257.50 thru 257.107), IPL prepared the following Post-Closure Plan detailing the steps to be undertaken during the required 30 year post-closure monitoring period in accordance with §257.104 of the Rule.

This document provides the following required information:

- Description of the monitoring and maintenance activities,
- Contact information of responsible entity for closed CCR facility during post-closure care and,
- Description of the planned uses of the property during post-closure period

The Prairie Creek Generating Station operated 12 surface impoundments at the site, of which 8 were managed as existing CCR impoundments under the provisions of the CCR Rule. This Post-Closure Plan applies to the following existing CCR surface impoundments:

- PCS Pond 1
- PCS Pond 2
- PCS Pond 3
- PCS Pond 4
- PCS Pond 5
- PCS Pond 6
- PCS Pond 7
- PCS Pond 8 (Discharge Pond)

In addition, the two bottom ash piles (CCR Piles) that are regulated as CCR Landfills will be closed and are subject to post-closure care requirements. These piles include the PCS Bottom Ash Pile and the PCS Beneficial Use Storage Area. Ponds #9 thru #11 as well as the coal runoff ponds are also not subject to post-closure care requirements since they are not designed to hold, treat, or dispose of CCR.

The initial location of the various CCR Units is provided for reference in Figure 1.

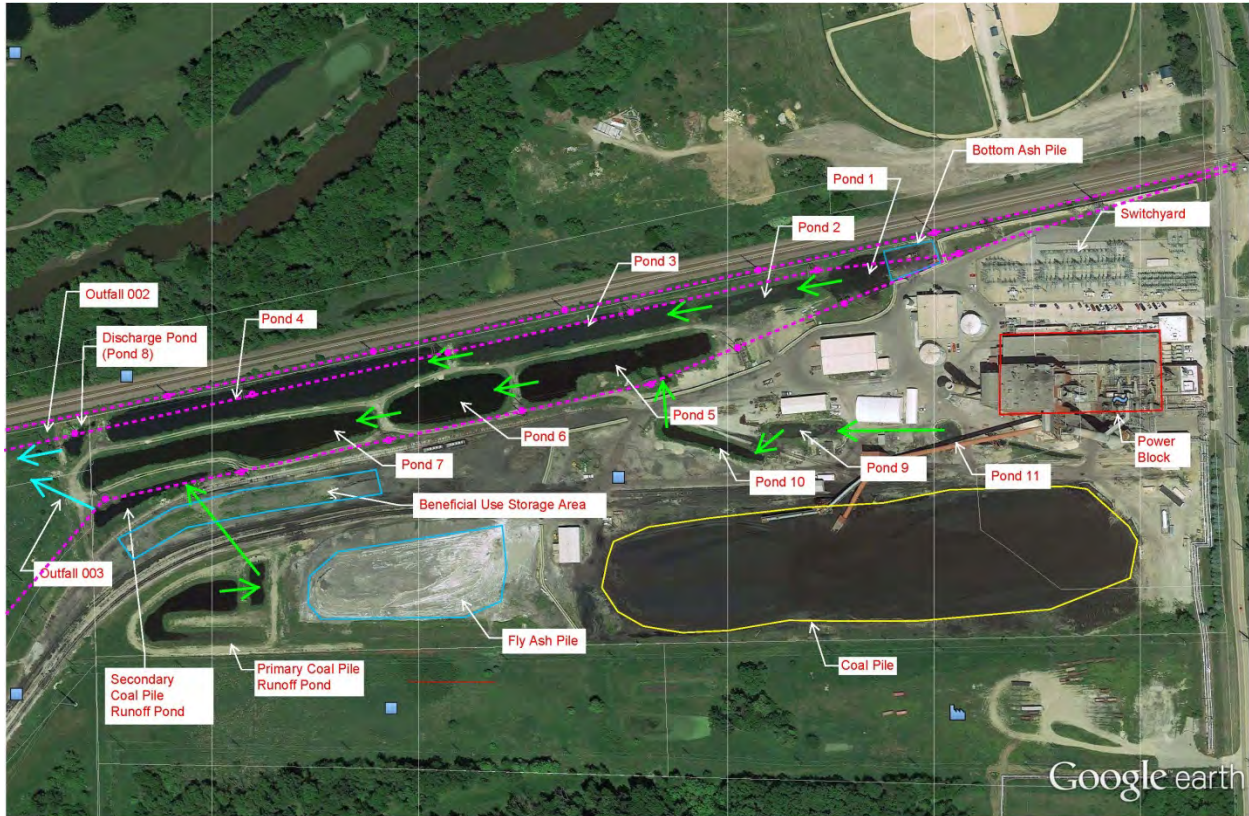


Figure 1: Initial Layout of CCR Units at Prairie Creek Generating Station

2. DESCRIPTION OF MONITORING / MAINTENANCE ACTIVITIES

The following table outlines the maintenance and monitoring activities to be undertaken during the 30-year post-closure care period, as required by 257.104(d)(1)(i) of the CCR Rule.

Monitoring and Maintenance Activities	Frequency
Mow Vegetation on Final Cover System	Semi-annually (minimum)
Visual Inspection by Plant Personnel	Monthly (minimum)
Visual Inspection and Report by Licensed Professional Engineer	As necessary
Repair of Vegetative Cover	As necessary
Repair of Final Cover System	Following observance of settlement, subsidence, erosion, or other events
Inspect Groundwater Monitoring System	Monthly
Repair of Groundwater Monitoring System	Following observance of an issue
Monitor the Groundwater	Semi-Annually

2.1 Mowing

The Station will perform regular mowing of the final cover system vegetation. Mowing will be performed on a semi-annual basis unless more frequent mowing is required to accommodate higher vegetation growth rates.

2.2 Visual Inspections by Owner / Operator

At a minimum, the Owner/Operator of the closed CCR units shall visually inspect the closure area on a monthly basis to identify any problem areas such as erosion, subsidence, settlement or other events. The monthly visual inspection will also include an inspection of the groundwater monitoring system to visually assess the condition of the protective casing and cover system. If problems are observed with the vegetative cover, actions will be taken to reseed the area and maintain the erosion protection provided by the vegetation. Should the monthly inspection identify issues concerning the final cover system or the groundwater monitoring system, actions will be taken to make repairs in accordance with the original design.

2.3 Visual Inspection and Report by Certified Professional Engineer

Should the visual inspections by plant personnel indicate potential concerns regarding the integrity of the final cover, a detailed inspection of the closed CCR units will be performed by a licensed professional engineer. The professional engineer will visually inspect the surface and side slopes of the closed impoundments to identify any problem areas such as erosion, subsidence, settlement or other events.

2.4 Groundwater Monitoring

The Station will maintain the groundwater monitoring system and monitor groundwater quality in accordance with the requirements of 40 CFR 257.90 through 257.98. Groundwater monitoring will be performed on a semi-annual basis in accordance with 40 CFR 257.94(b) and recordkeeping in accordance with the requirements of 40 CFR 257.94(f).

3. CONTACT INFORMATION FOR POST-CLOSURE CARE

As required by 257.104(d)(1)(ii) of the CCR Rule, the following contact information is provided if the need arises to discuss the contents or adequacy of this Post-Closure Plan with Station personnel:

Prairie Creek Generating Station
Attn: Plant Manager
3300 C St. SW
Cedar Rapids, IA 52404
(319) 786-8440
CCRProgram@alliantenergy.com

4. PROPERTY USE DURING POST-CLOSURE CARE PERIOD

Per the requirements of 257.104(d)(1)(iii) of the CCR Rule, the intended use of the closed CCR units at this facility – as of the issue date of this Plan – is to remain a natural, undisturbed vegetated area.

5. CERTIFICATIONS

It is S&L's opinion that this written post- closure plan meets the requirements of 40 CFR 257.104(d).

6. REFERENCES

1. 40 CFR Part 257, Subpart D – Environmental Protection Agency Hazardous and Solid Waste Management System; Disposal of Coal Combustion Residuals from Electric Utilities.