



Post-Closure Care Plan Slag Pond

Nelson Dewey Generating Station

Prepared for:

Wisconsin Power and Light Company

Nelson Dewey Generating Station
11999 County Highway VV
Cassville, Wisconsin 53806

Prepared by:

SCS ENGINEERS

2830 Dairy Drive
Madison, Wisconsin 53718-6751
(608) 224-2830

October 2016
File No. 25216054.00

Offices Nationwide
www.scsengineers.com

**Post-Closure Care Plan
Slag Pond**

Nelson Dewey Generating Station

Prepared for:

Wisconsin Power and Light Company
Nelson Dewey Generating Station
11999 County Highway VV
Cassville, Wisconsin 53806

Prepared by:

SCS ENGINEERS
2830 Dairy Drive
Madison, Wisconsin 53718-6751
(608) 224-2830

October 2016
File No. 25216054.00

Table of Contents

Section	Page
PE Certification.....	iii
1.0 Introduction and Project Summary	1
2.0 Monitoring and Maintenance Activities.....	1
2.1 Final Cover Maintenance.....	2
2.2 Groundwater Monitoring and System Maintenance	2
3.0 Post-Closure Period Contacts.....	2
4.0 Post-Closure Period Site Use	2
5.0 Certifications.....	3
6.0 Recordkeeping and Reporting	3

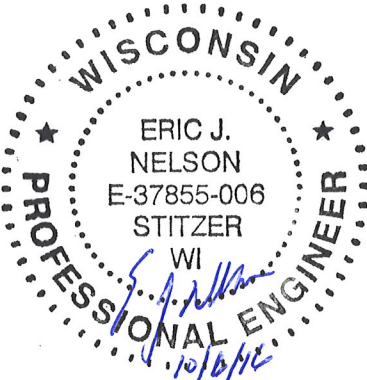
Figures

- 1 Site Location Map
- 2 Site Plan

I:\25216054.00\Deliverables\Slag Pond Post-Closure Care Plan\WPL_NED-Slag Pond_ Post-Closure Care Plan_Final.docx

[This page left blank intentionally]

PE CERTIFICATION

	<p>I, Eric J. Nelson, hereby certify that this Post-Closure Care Plan meets the requirements of 40 CFR 257.104(d), was prepared by me or under my direct supervision, and that I am a duly licensed Professional Engineer under the laws of the State of Wisconsin.</p>
	<p><i>[Signature]</i></p> <p>(signature)</p>
	<p><i>10/6/2016</i></p> <p>(date)</p>
	<p><i>Eric J. Nelson</i></p> <p>(printed or typed name)</p>
	<p>License number <u><i>E-37855-6</i></u></p> <p>My license renewal date is <u><i>7/31/18</i></u>.</p> <p>Pages or sheets covered by this seal:</p> <p><i>October 2016 Post-Closure Care Plan -</i></p> <p><i>SLAG POND, WPL NELSON DEWEY</i></p>

[This page left blank intentionally.]

1.0 INTRODUCTION AND PROJECT SUMMARY

On behalf of Wisconsin Power and Light Company (WPL), SCS Engineers (SCS) has prepared this Post-Closure Care Plan for the Slag Pond at the Nelson Dewey Generating Station (NED) facility in accordance with 40 CFR 257.104(d) as follows.

40 CFR 257.104(d). *“Written post-closure plan – (1) Content of the plan. The owner or operator of a CCR unit must prepare a written post-closure plan that includes, as a minimum, the information specified in paragraphs (d)(1)(i) through (iii) of this section.”*

The NED facility includes three coal combustion residuals (CCR) units:

- Slag Pond – The Slag Pond is an active, unlined CCR surface impoundment. The Slag Pond is subject to the requirements of 40 CFR 257.102 and will be closed by leaving CCR in place under a final cover system. Therefore, the Slag Pond is also subject to the requirements of 40 CFR 257.104.
- Wisconsin Pollutant Discharge Elimination System (WPDES) Pond – The WPDES Pond is an inactive, unlined CCR surface impoundment. The WPDES Pond is not the subject of this plan and is not discussed further herein.
- CCR landfill – The CCR landfill was closed prior to October 19, 2015, and is not subject to the rule requirements. The closure was approved by the Wisconsin Department of Natural Resources (WDNR).

The site location is shown on **Figure 1**, and **Figure 2** shows the current conditions at the facility and monitoring locations.

CCR will be consolidated within the Slag Pond and the area will be closed by covering the CCR with the final cover system as described in the Closure Plan for this CCR unit. Following the closure of the Slag Pond at the NED facility, WPL will conduct post-closure care in accordance with 40 CFR 257.104(b) for the required 30 years.

2.0 MONITORING AND MAINTENANCE ACTIVITIES

40 CFR 257.104(d)(1)(i). *“A description of the monitoring and maintenance activities required in paragraph (b) of this section for the CCR unit, and the frequency at which these activities will be performed.”*

Monitoring and Maintenance Activities	Frequency
Mowing	Semi-Annually
Inspections by Owner/Operator	Monthly
Repair to final cover for erosion concerns	As needed, determined by inspection
Environmental Monitoring (groundwater)	Semi-Annually

The owner/operator will perform monthly inspections of the final cover surface and groundwater monitoring systems. If issues are noticed during the inspection, action will be taken to remedy the situation. Eroded areas will be repaired and reseeded. Repairs or replacement will be performed on groundwater monitoring system components as needed.

2.1 FINAL COVER MAINTENANCE

Mowing will be performed semi-annually during the growing season unless additional mowing is required in response to the vegetation growth rate. If eroded areas are noted during monthly inspections, WPL will repair and reseed the area.

2.2 GROUNDWATER MONITORING AND SYSTEM MAINTENANCE

Groundwater monitoring wells B7R, B11R/B11A/B11B, B26, B31A, and B31R will be maintained and sampled semi-annually for the parameters listed in Appendix III to Part 257 and in accordance with 40 CFR 257.90-98.

3.0 POST-CLOSURE PERIOD CONTACTS

40 CFR 257.104(d)(1)(ii). *“The name, address, telephone number, and email address of the person or office to contact about the facility during the post-closure period.”*

The contact information for NED during the post-closure period is as follows:

Alliant Energy
Attn: Nelson Dewey Generating Station Site Manager
4902 N. Biltmore Lane
Madison, WI 53718
(800) 255-4268
CCRProgram@alliantenergy.com

4.0 POST-CLOSURE PERIOD SITE USE

40 CFR 257.104(d)(1)(iii). *“A description of the planned uses of the property during the post-closure period. Post-closure use of the property shall not disturb the integrity of the final cover, liner(s), or any other component of the containment system or the function of the monitoring systems unless necessary to comply with the requirements of the subpart...”*

The final use of the NED Slag Pond will be privately owned green space. With this use, there will be no disturbance of the final cover or any other related components.

5.0 CERTIFICATIONS

40 CFR 257.104(d)(4). *“The owner or operator of the CCR unit must obtain a written certification from a qualified professional engineer that the initial and any amendment of the written post-closure plan meets the requirements of this section.”*

Eric Nelson, PE, a licensed professional engineer in the State of Wisconsin, has overseen the preparation of this Post-Closure Care Plan. A certification statement is provided on **page iii** of this plan.

6.0 RECORDKEEPING AND REPORTING

40 CFR 257.104(b)(2)(iii). *“The owner or operator has completed the written post-closure plan when the plan including the certification required by paragraph (d)(4) of this section, has been placed in the facility’s operating record as required by Section 257.105(i)(4).”*

The Post-Closure Care Plan will be placed in the facility’s operating record and on Alliant Energy’s CCR Rule Compliance Data and Information website, as will all amendments, if any.

WPL will amend the Post-Closure Care Plan if there is a change in operation of the CCR unit that affects the written Post-Closure Care Plan or, if after post-closure activities have started, unexpected events cause a revision of the plan.

WPL will provide notification of completion of the post-closure care no later than 60 days following the completion of the post-closure care period. The notification will include certification by a qualified professional engineer verifying that post-closure care has been completed in accordance with the plan. The notification will be placed in the facility’s operating record and on the website.

FIGURES

- 1 Site Location Map
- 2 Site Plan

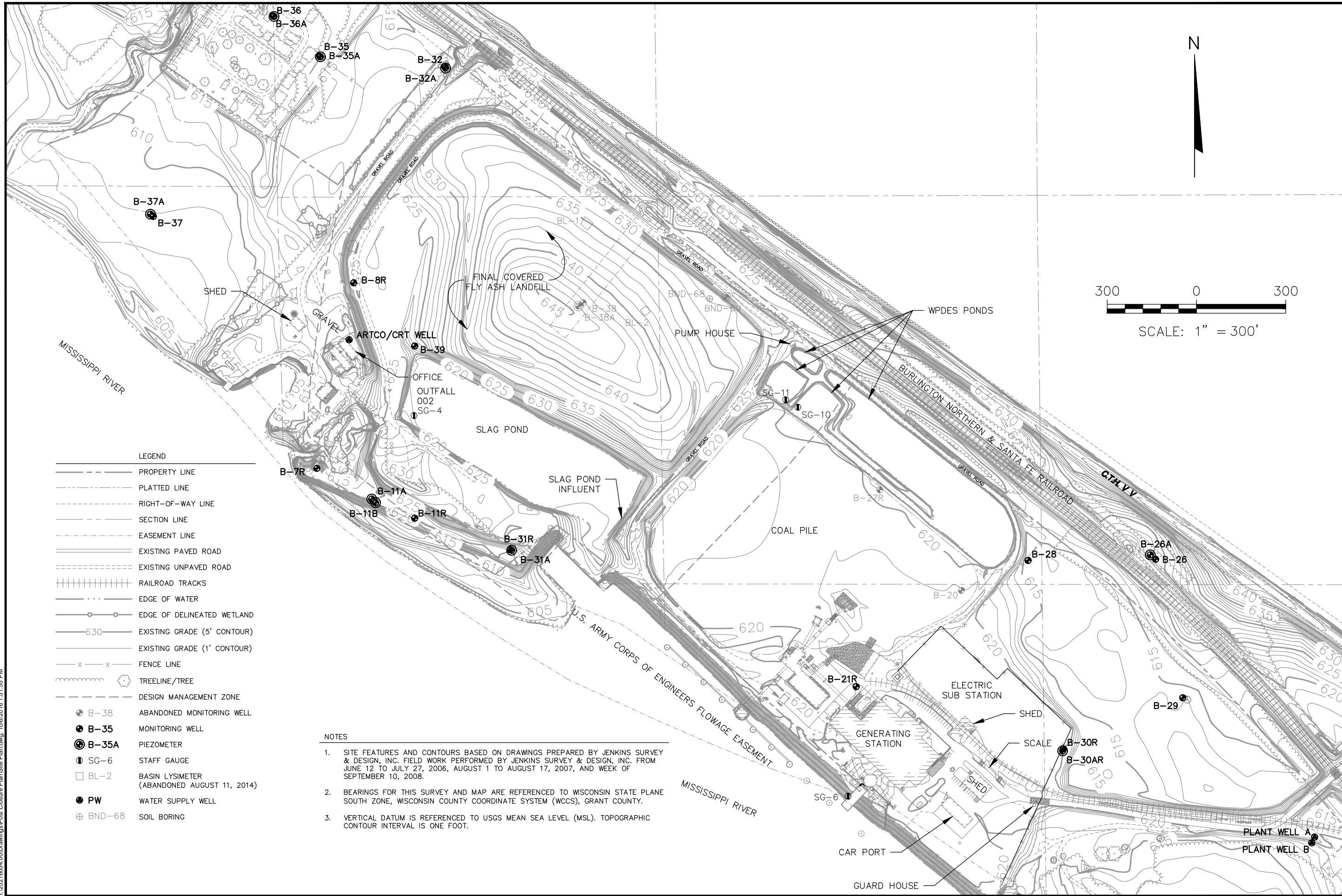


CASSVILLE AND TURKEY RIVER QUADRANGLES
 WISCONSIN-IOWA
 7.5 MINUTE SERIES (TOPOGRAPHIC)
 1978/1980
 SCALE: 1" = 2,000'



CLIENT	WISCONSIN POWER AND LIGHT CO. NELSON DEWEY GENERATING STATION 11999 COUNTY HIGHWAY VV CASSVILLE WI, 53806		SITE	POST CLOSURE PLAN SLAG POND WISCONSIN POWER AND LIGHT NELSON DEWEY GENERATING STATION CASSVILLE, WISCONSIN		ENGINEER	SCS ENGINEERS 2830 DAIRY DRIVE MADISON, WI 53718-6751 PHONE: (608) 224-2830	SITE LOCATION MAP
	PROJECT NO.	25216054.00		DRAWN BY:	KP			
	DRAWN:	02/26/16	CHECKED BY:	RG				
	REVISED:	09/02/16	APPROVED BY:	EN 10/06/16				

I:\25216054.00\Drawings\Post Closure Plan\Site Plan.dwg, 10/6/2016 1:51:55 PM



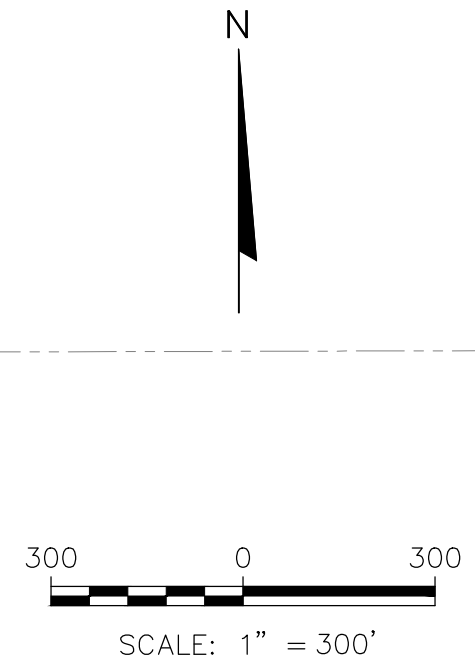
LEGEND

---	PROPERTY LINE
- - -	PLATTED LINE
- · - · -	RIGHT-OF-WAY LINE
- - - - -	SECTION LINE
- · - · -	EASEMENT LINE
==	EXISTING PAVED ROAD
- - -	EXISTING UNPAVED ROAD
	RAILROAD TRACKS
- · - · -	EDGE OF WATER
- · - · -	EDGE OF DELINEATED WETLAND
6.30	EXISTING GRADE (5' CONTOUR)
6.30	EXISTING GRADE (1' CONTOUR)
x - x	FENCE LINE
~~~~~	TREELINE/TREE
- - - - -	DESIGN MANAGEMENT ZONE

⊕ B-38	ABANDONED MONITORING WELL
● B-35	MONITORING WELL
⊙ B-35A	PIEZOMETER
① SG-6	STAFF GAUGE
□ BL-2	BASIN LYSIMETER (ABANDONED AUGUST 11, 2014)
● PW	WATER SUPPLY WELL
⊕ BND-68	SOIL BORING

**NOTES**

- SITE FEATURES AND CONTOURS BASED ON DRAWINGS PREPARED BY JENKINS SURVEY & DESIGN, INC. FIELD WORK PERFORMED BY JENKINS SURVEY & DESIGN, INC. FROM JUNE 12 TO JULY 27, 2006, AUGUST 1 TO AUGUST 17, 2007, AND WEEK OF SEPTEMBER 10, 2008.
- BEARINGS FOR THIS SURVEY AND MAP ARE REFERENCED TO WISCONSIN STATE PLANE SOUTH ZONE, WISCONSIN COUNTY COORDINATE SYSTEM (WCSS), GRANT COUNTY.
- VERTICAL DATUM IS REFERENCED TO USGS MEAN SEA LEVEL (MSL). TOPOGRAPHIC CONTOUR INTERVAL IS ONE FOOT.



CLIENT WISCONSIN POWER AND LIGHT CO. NELSON DEWEY GENERATING STATION 11999 COUNTY HIGHWAY W CASSVILLE, WI 53806	SITE POST-CLOSURE PLAN SLAG POND WISCONSIN POWER AND LIGHT NELSON DEWEY GENERATING STATION CASSVILLE, WISCONSIN	ENGINEER EN 10/06/16	SCS ENGINEERS 2830 DAIRY DRIVE MADISON, WI 53718-6751 PHONE: (608) 224-2830		FIGURE 2
			PROJECT NO. 25216054.00	DRAWN BY: KP	SITE PLAN
DRAWN: 02/26/16	CHECKED BY: RG	APPROVED BY: EN 09/23/16			